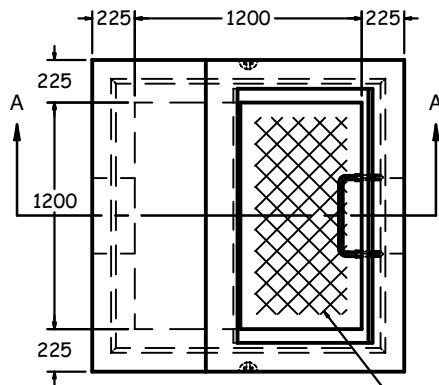
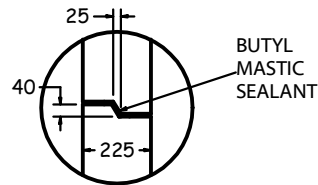


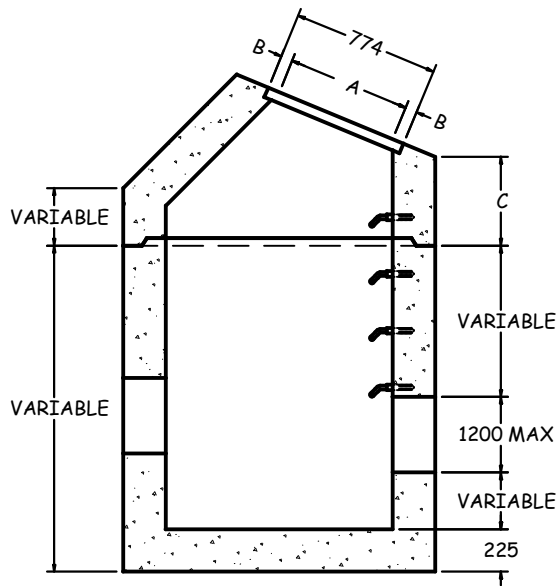
TOP VIEW  
1:40



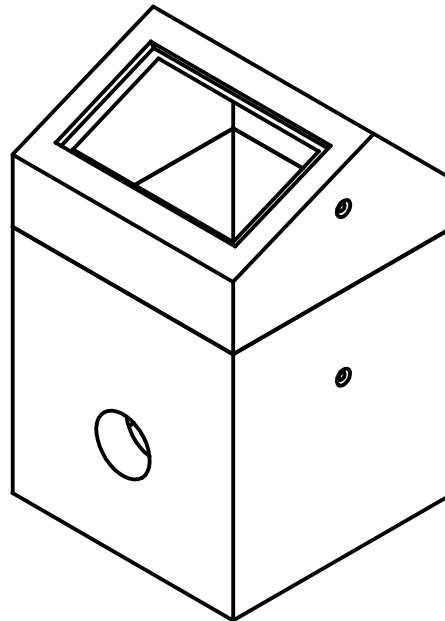
GRATING TYPE B  
OPSD 403.01



JOINT CROSS SECTION



SECTION A-A  
1:40



ISOMETRIC VIEW  
1:40

**SPECIFICATIONS**

ALL DIMENSIONS IN MILLIMETRES.

**CONCRETE:**

45 MPa @ 28 DAYS,  
6% AIR ENTRAINMENT IN ACCORDANCE  
WITH CSA A23.1 MOD-M90

**REINFORCING:**

IN ACCORDANCE WITH CSA A23.1-M90  
ALL REINFORCING STEEL HAS 30mm MIN. COVER

**WEIGHT:**

WALLS	-3121 KG/V.M.
MONOBASE	-804 KG
DI TOP	-2312 KG

**NOTES:**

PRODUCT MANUFACTURED TO O.P.S.D. 702.040.

MANUFACTURED IN ACCORDANCE WITH OPSS 1351.

REINFORCING DETAILS AVAILABLE UPON REQUEST.

ALL PIECES INCLUDE SWIFT LIFT LIFTING ANCHORS.


ALL MAINTENANCE HOLES INCLUDE  
HOLLOW ALUMINUM LADDER RUNGS AS PER OPSD 405.010.  
MAX. HOLE SIZE @ 90° IS 1200mm.

**OPTIONS AVAILABLE UPON REQUEST INCLUDE:**

- PIPE GASKETS
- CAST-IN SUB-DRAIN COUPLERS
- DRILLED WEEP HOLES.

GRATE		DIMENSIONS		
TYPE	SLOPE	A	B	C
B	2:1	670	52	309
	3:1	632	71	442
	4:1	618	78	508
	6:1	608	83	576
	HOR	608	87	715

**1200x1200mm DITCH INLET MANHOLE TYPE A (DI1200)**

	1645 SYDENHAM RD. KINGSTON, ONT.
	PHONE: (800) 223-0012 1-613-546-6683
www.anchorconcrete.com	