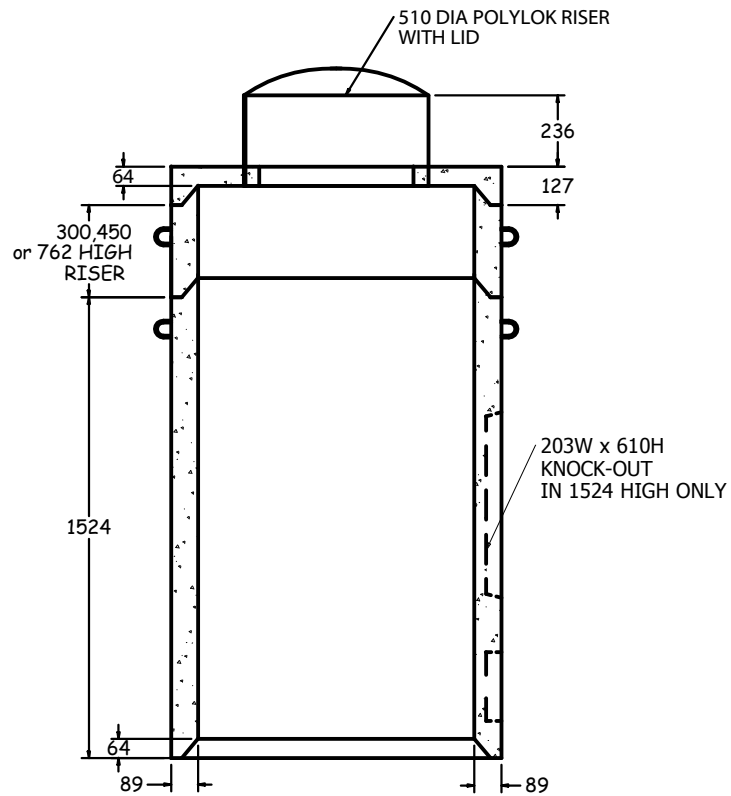
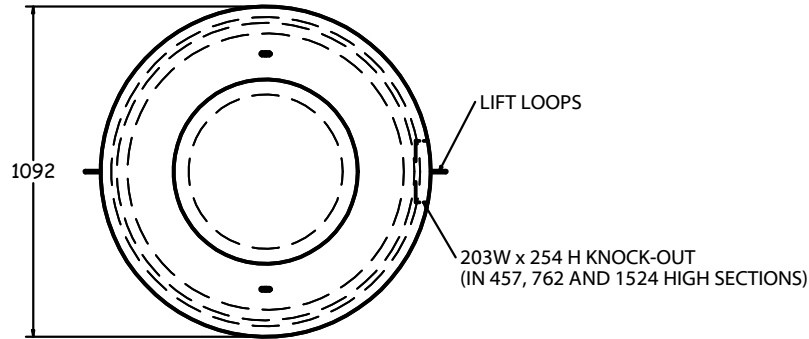
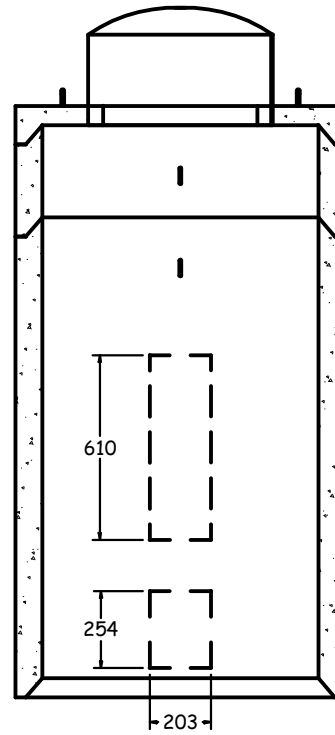


TOP VIEW
1:25



SIDE SECTION
1:25



FRONT SECTION
1:25

36" (914) DIA WELL TILE (WT1000)

SPECIFICATIONS

ALL DIMENSIONS IN MILLIMETRES.

NOM. CAPACITY:

3.7 GALLONS/IN. VERTICALLY.
656 LITRES/M VERTICALLY.

CONCRETE:


35 MPa @ 28 DAYS,
6% AIR ENTRAINMENT IN ACCORDANCE
WITH CSA A23.1 MOD-M90

WEIGHT:

LID	- 206 KG
RISER	- 696 KG/VERTICAL M
FOR 300 (12")	- 206 KG (450 LB.)
FOR 457 (18")	- 307 KG (675 LB.)
FOR 762 (30")	- 511 KG (1125 LB.)
FOR 1524 (60")	- 1023 KG (2250 LB.)

NOTES:

ALL PIECES INCLUDE LIFT HOOKS.

 <p>ANCHOR CONCRETE PRODUCTS</p>	<p>1645 SYDENHAM RD. KINGSTON, ONT.</p>
	<p>PHONE: (800) 223-0012 1-613-546-6683</p>
<p>www.anchorconcrete.com</p>	