

**OPTIONS AVAILABLE UPON REQUEST INCLUDE:**

DUCT TERMINATORS  
CAST IRON EMBOSSED W/ "TRAFFIC"  
"ELECTRIC"  
"T.H.S.L."  
"T.H.E.S."  
"M.T.O. SP" etc.

**SPECIFICATIONS**

**ALL DIMENSIONS IN MILLIMETRES.**

**CONCRETE:**

**45 MPa @ 28 DAYS,  
6% AIR ENTRAINMENT IN ACCORDANCE  
WITH CSA A23.1 MOD-M90**

**REINFORCING:**

**IN ACCORDANCE WITH CSA A23.1-M90  
ALL REINFORCING STEEL HAS 30mm MIN. COVER**

**WEIGHT:**

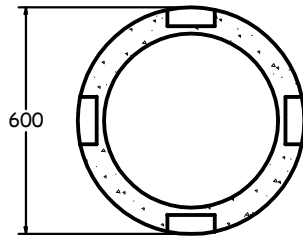
**240 KG**

**NOTES:**

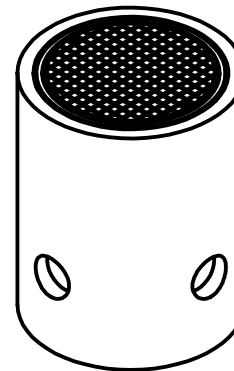
**MANUFACTURED IN ACCORDANCE WITH  
OPSD 2112.020.**

**REINFORCING DETAILS AVAILABLE UPON REQUEST.**

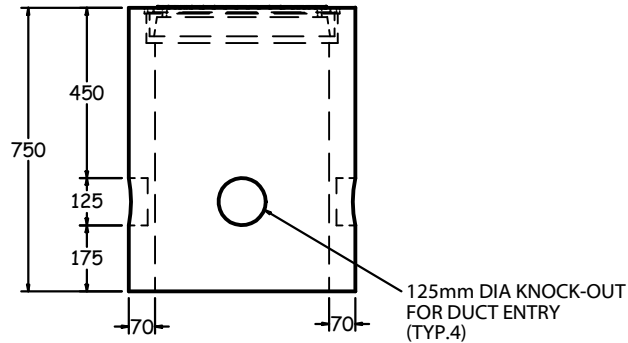
**ALSO AVAILABLE IN 900mm AND 1100mm HIGH.**



SECTION VIEW  
1:20



ISOMETRIC VIEW  
1:20



FRONT VIEW  
1:20

**460mm DIA. ELECTRICAL HANDHOLE, WITH STD COVER (EL1000)**



1645 SYDENHAM RD.  
KINGSTON, ONT.

PHONE:  
(800) 223-0012  
1-613-546-6683

[www.anchorconcrete.com](http://www.anchorconcrete.com)