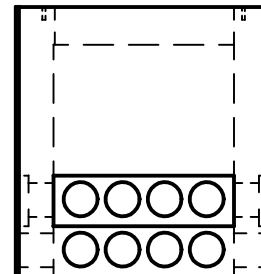
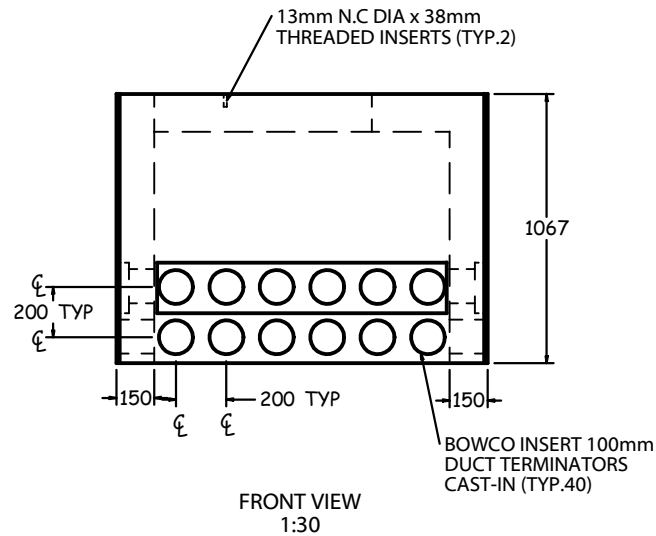


ISOMETRIC VIEW
1:30



SIDE VIEW
1:30

ACP-110 VAULT (EL2000)

SPECIFICATIONS

ALL DIMENSIONS IN MILLIMETRES.

CONCRETE:

35 MPa @ 28 DAYS,
6% AIR ENTRAINMENT IN ACCORDANCE
WITH CSA A23.1 MOD-M90

REINFORCING:

IN ACCORDANCE WITH CSA A23.1-M90
ALL REINFORCING STEEL HAS 30mm MIN. COVER

WEIGHT:

1500 KG

NOTES:

REINFORCING DETAILS AVAILABLE UPON REQUEST.

SUITABLE FOR SINGLE PHASE TRANSFORMERS
OR 4-WAY MINI-T SECTIONALIZERS.

CAST-IN DUCT TERMINATORS FOR
SCH 40/80 100mm DUCTS.

VARIABLE OPENINGS IN TOP SLAB
AVAILABLE UPON REQUEST.

CAST-IN PULLING EYES AVAILABLE UPON REQUEST.



1645 SYDENHAM RD.
KINGSTON, ONT.

PHONE:
(800) 223-0012
1-613-546-6683

www.anchorconcrete.com