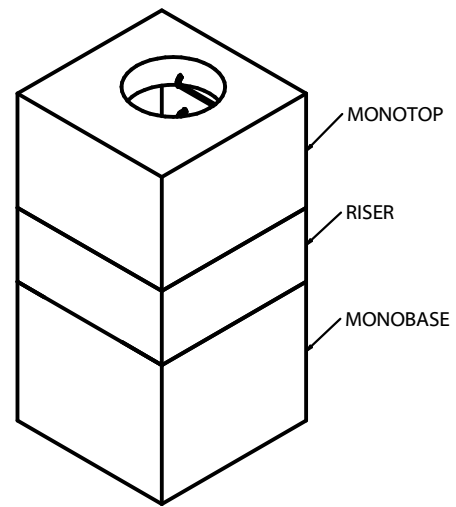


SECTION A-A  
1:40



ISOMETRIC VIEW  
1:50

**900x900 BOX MANHOLE (BM0900)**

**SPECIFICATIONS**

ALL DIMENSIONS IN MILLIMETRES.

**CONCRETE:**

45 MPa @ 28 DAYS,  
6% AIR ENTRAINMENT IN ACCORDANCE  
WITH CSA A23.1 MOD-M90

**REINFORCING:**

IN ACCORDANCE WITH CSA A23.1-M90  
ALL REINFORCING STEEL HAS 30mm MIN. COVER

**WEIGHT:**

|               |               |
|---------------|---------------|
| WALLS         | -2430 KG/V.M. |
| MONO BASE/TOP | -437 KG       |
| TOP SLAB      | -984 KG       |

**NOTES:**

- PRODUCT MANUFACTURED TO C.H.B.D.C. LOADING.
- MANUFACTURED IN ACCORDANCE WITH OPSS 1351.
- REINFORCING DETAILS AVAILABLE UPON REQUEST.
- ALL PIECES INCLUDE SWIFT LIFT LIFTING ANCHORS.
- ALL MAINTENANCE HOLES INCLUDE HOLLOW ALUMINUM LADDER RUNGS AS PER OPSD 405.010.
- SUMP AVAILABLE UPON REQUEST.
- VARIABLE OPENINGS IN TOP SLAB AVAILABLE UPON REQUEST.
- MAX. BURIAL DEPTH: 900mm.  
DEEP BURIAL DEPTHS AVAILABLE UPON REQUEST.
- REFER TO DRAWING MH-3 FOR MAX. PIPE SIZES.  
PIPE GASKETS AVAILABLE UPON REQUEST.
- REFER TO INSTALLATION GUIDELINES FOR BOX MANHOLES AND CHAMBERS.

|  |   |
|--|---|
| <p><b>ANCHOR</b><br/>CONCRETE PRODUCTS</p> | <p>1645 SYDENHAM RD.<br/>KINGSTON, ONT.</p>         |
|  | <p>PHONE:<br/>(800) 223-0012<br/>1-613-546-6683</p> |
| <p>www.anchorconcrete.com</p>              |   |