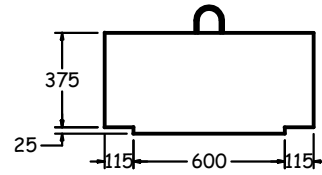
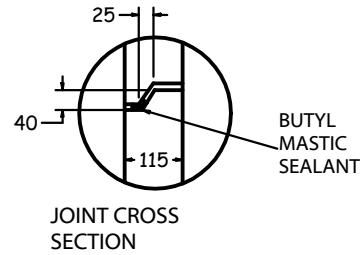
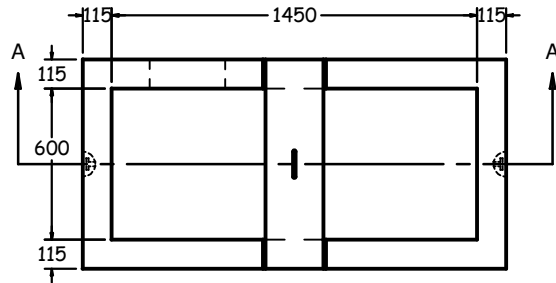
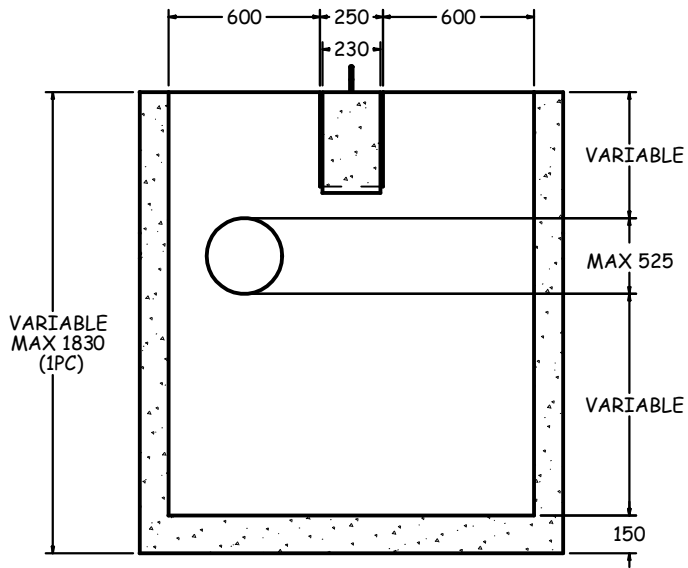


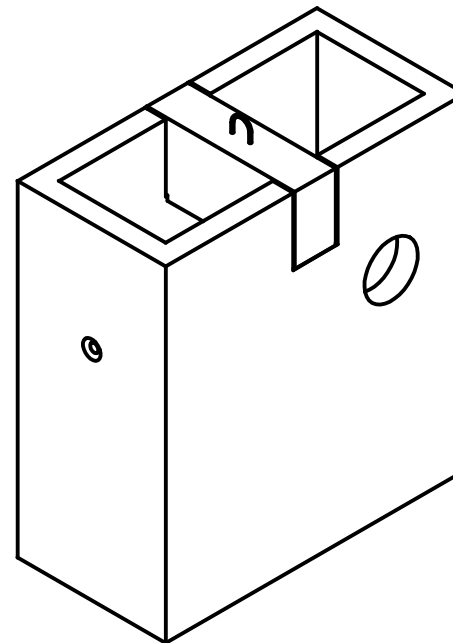
TOP VIEW  
1:30



BEAM DETAIL



SECTION A-A  
1:30



ISOMETRIC VIEW  
1:30

**SPECIFICATIONS**

ALL DIMENSIONS IN MILLIMETRES.

**CONCRETE:**

35 MPa @ 28 DAYS,  
6% AIR ENTRAINMENT IN ACCORDANCE  
WITH CSA A23.1 MOD-M90

**REINFORCING:**

IN ACCORDANCE WITH CSA A23.1-M90  
ALL REINFORCING STEEL HAS 30mm MIN. COVER

**WEIGHT:**

WALLS -1259 KG/V.M.  
BASE -313 KG

**NOTES:**

- PRODUCT MANUFACTURED TO O.P.S.D. 702.02.
- MANUFACTURED IN ACCORDANCE WITH OPSS 1351.
- REINFORCING DETAILS AVAILABLE UPON REQUEST.
- ALL PIECES INCLUDE SWIFT LIFT LIFTING ANCHORS.
- OPTIONS AVAILABLE UPON REQUEST INCLUDE:
  - PIPE GASKETS
  - CAST-IN SUB-DRAIN COUPLERS
  - DRILLED WEEP HOLES.

**600x1450 TWIN INLET CATCH BASIN (CB1450)**



1645 SYDENHAM RD.  
KINGSTON, ONT.

PHONE:  
(800) 223-0012  
1-613-546-6683

[www.anchorconcrete.com](http://www.anchorconcrete.com)