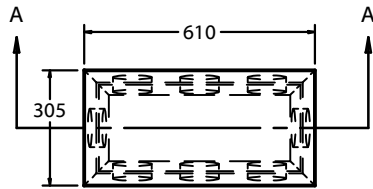
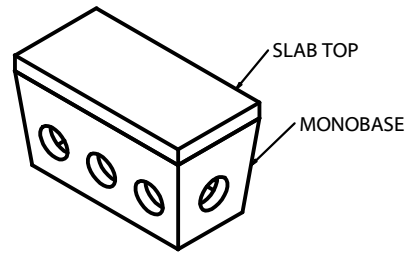


TOP VIEW
1:20



ISOMETRIC VIEW
1:20



SPECIFICATIONS

ALL DIMENSIONS IN MILLIMETRES.

CONCRETE:

35 MPa @ 28 DAYS,
6% AIR ENTRAINMENT IN ACCORDANCE
WITH CSA A23.1 MOD-M90

REINFORCING:

IN ACCORDANCE WITH CSA A23.1-M90
ALL REINFORCING STEEL HAS 30mm MIN. COVER.
REINFORCING DETAILS AVAILABLE UPON REQUEST.

INLET & OUTLET:

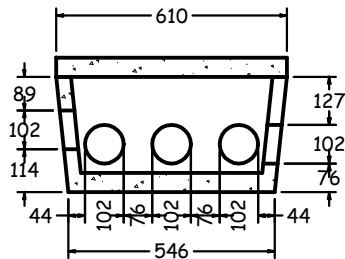
LOW PRESSURE PIPE SEALS FOR
51 (2"), 76 (3") OR 102 (4") PIPE
(INVERT AT SAME ELEVATION).

WEIGHT:

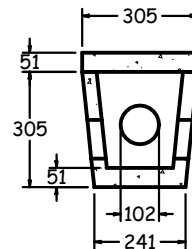
BOTTOM	-47 KG
TOP SLAB	-23 KG

NOTES:

MAX. BURIAL DEPTH: 610mm.



SECTION A-A
1:20



END SECTION
1:20

DISTRIBUTION BOX (ST2000)



1645 SYDENHAM RD.
KINGSTON, ONT.

PHONE:
(800) 223-0012
1-613-546-6683

www.anchorconcrete.com