

**OPTIONS AVAILABLE UPON REQUEST INCLUDE:**

DUCT TERMINATORS  
 SUMP W/DRAIN  
 CAST-IN CABLE RACKS  
 CAST IRON EMBOSSED W/ ELECTRICAL OR  
 COMMUNICATION

**SPECIFICATIONS**

ALL DIMENSIONS IN MILLIMETRES.

**CONCRETE:**

35 MPa @ 28 DAYS,  
 6% AIR ENTRAINMENT IN ACCORDANCE  
 WITH CSA A23.1 MOD-M90

**REINFORCING:**

IN ACCORDANCE WITH CSA A23.1-M90  
 ALL REINFORCING STEEL HAS 30mm MIN. COVER

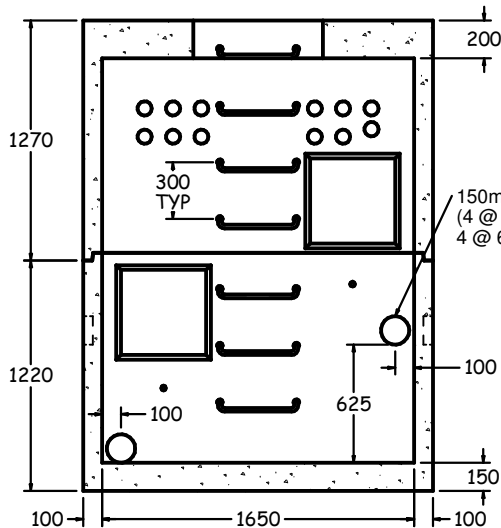
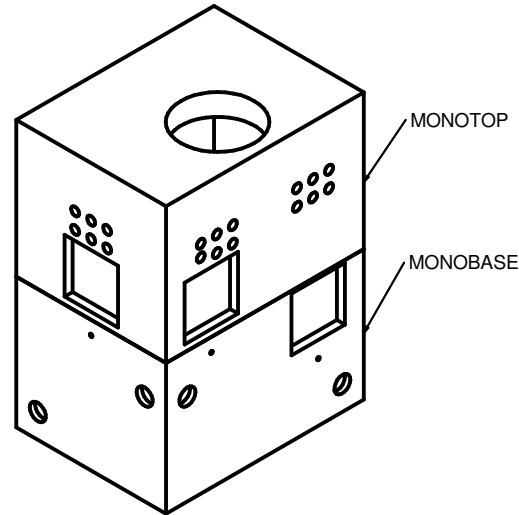
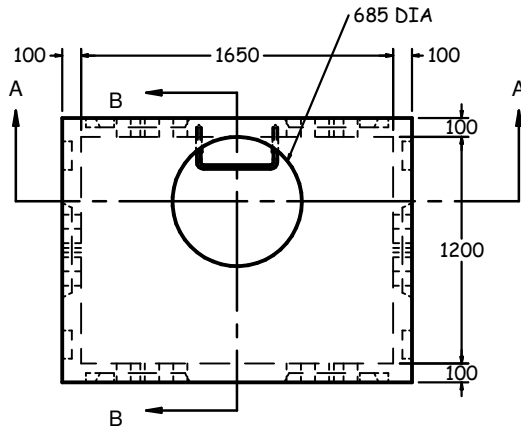
**WEIGHT:**

MONOBASE	-2.5 TONNES
MONOTOP	-2.5 TONNES

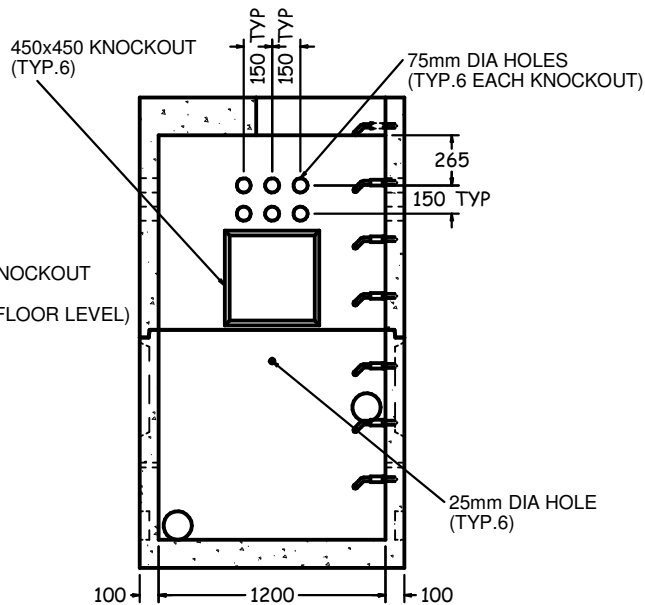
**NOTES:**

PRODUCT MANUFACTURED TO C.H.B.D.C. LOADING.  
 MANUFACTURED IN ACCORDANCE WITH OPSS 1351.  
 REINFORCING DETAILS AVAILABLE UPON REQUEST.  
 ALL PIECES INCLUDE SWIFT LIFT LIFTING ANCHORS.  
 INCLUDES SOLID ALUMINUM LADDER RUNGS  
 AS PER OPSD 405.020.

TOP VIEW  
 1:40



SECTION A-A  
 1:40



SECTION B-B  
 1:40

**1200x1650mm ELECTRICAL MAINTENANCE HOLE (EL3000)**



1645 SYDENHAM RD.  
 KINGSTON, ONT.

PHONE:  
 (800) 223-0012  
 1-613-546-6683

[www.anchorconcrete.com](http://www.anchorconcrete.com)