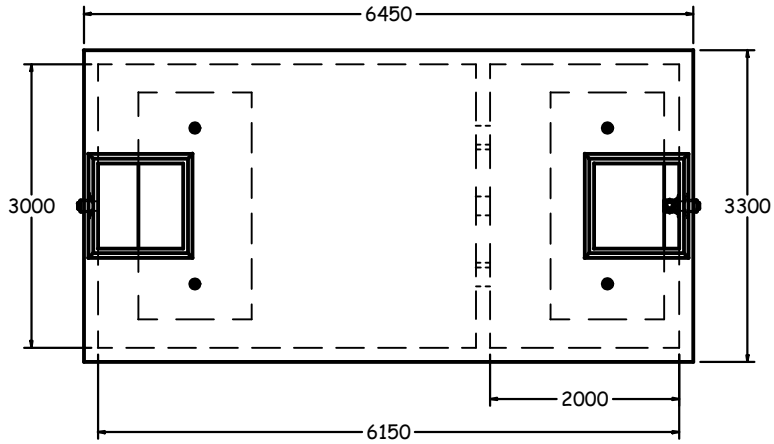
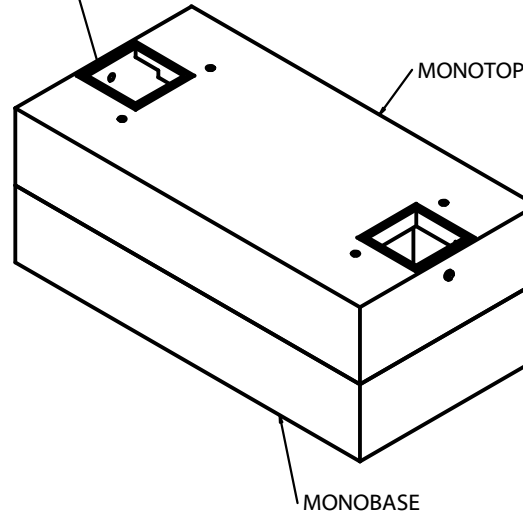


TOP VIEW
1:80



SEE "MODULAR TANK ACCESS" PAGE
FOR ACCESS OPTIONS



SPECIFICATIONS

ALL DIMENSIONS IN MILLIMETRES.

NOM. CAPACITY:

7700 GALLONS (35000 LITRES) TO INVERT OF OUTLET.
91.3 GALLONS/IN. VERTICALLY.
16340 LITRES/M VERTICALLY.

CONCRETE:

45 MPa @ 28 DAYS,
6% AIR ENTRAINMENT IN ACCORDANCE
WITH CSA A23.1 MOD-M90

REINFORCING:

IN ACCORDANCE WITH C.H.B.D.C. LOADING OPSS 1351.
ALL REINFORCING STEEL HAS 30mm MIN. COVER.
REINFORCING DETAILS AVAILABLE UPON REQUEST.

BAFFLES:

INLET: PVC PLASTIC LOCKED INTO CONCRETE.

INLET & OUTLET:

POLYLOK TYPE III PIPE SEALS FOR
51 (2'), 76 (3") OR 102 (4") PIPE.

WEIGHT:

BOTTOM	-16600 KG
TOP SLAB	-16600 KG

NOTES:

MAX. BURIAL DEPTH: 610mm.
DEEP BURIAL TANKS AVAILABLE UPON REQUEST.

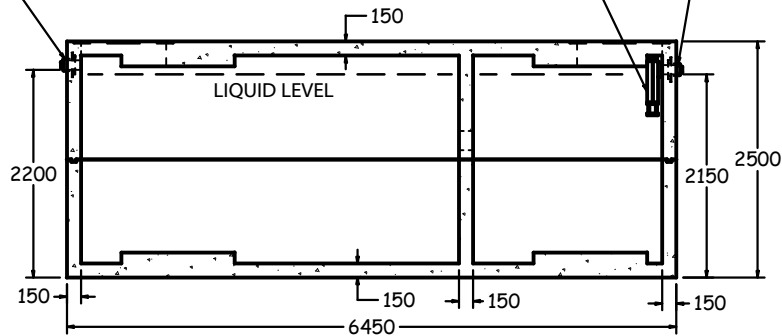
ACCESS OPTIONS AVAILABLE.
SEE "MODULAR ACCESS OPTIONS PAGE".

ABOVE GROUND INSTALLATION NOT PERMITTED.
REFER TO INSTALLATION GUIDELINES FOR TANKS.

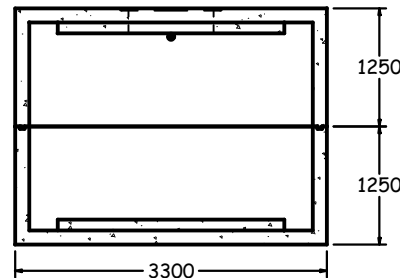
EFFLUENT FILTER

OUTLET

INLET



SIDE SECTION
1:80



END SECTION
1:80

7700 GALLON SEPTIC TANK (ST3000)



1645 SYDENHAM RD.
KINGSTON, ONT.

PHONE:
(800) 223-0012
1-613-546-6683

www.anchorconcrete.com