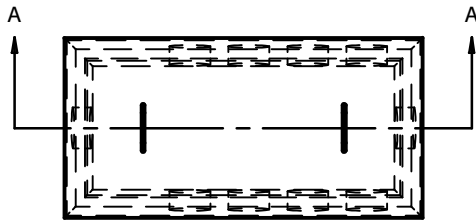
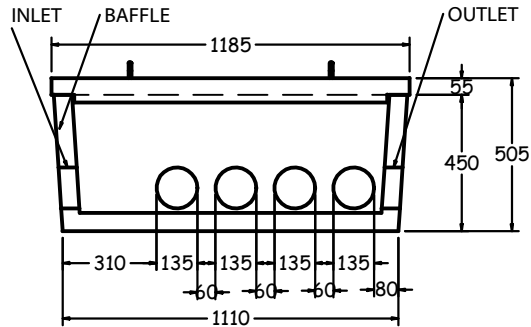
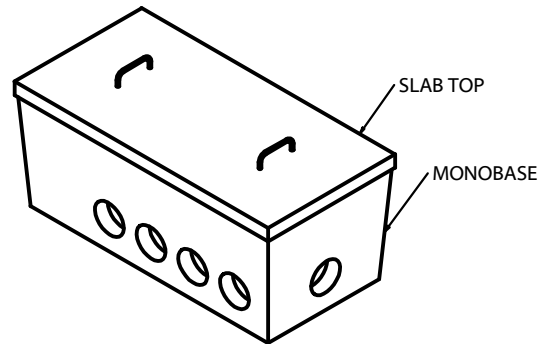


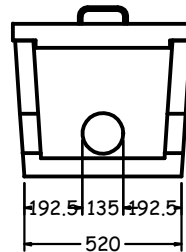
TOP VIEW
1:25



ISOMETRIC VIEW
1:25



SECTION A-A
1:25



END SECTION
1:25

SPECIFICATIONS

ALL DIMENSIONS IN MILLIMETRES.

CONCRETE:

35 MPa @ 28 DAYS,
6% AIR ENTRAINMENT IN ACCORDANCE
WITH CSA A23.1 MOD-M90

REINFORCING:

IN ACCORDANCE WITH CSA A23.1-M90
ALL REINFORCING STEEL HAS 30mm MIN. COVER.
REINFORCING DETAILS AVAILABLE UPON REQUEST.

INLET & OUTLET:

LOW PRESSURE PIPE SEALS FOR
51 (2'), 76 (3") OR 102 (4") PIPE
(INVERT AT SAME ELEVATION).

WEIGHT:

| | |
|----------|---------|
| BOTTOM | -240 KG |
| TOP SLAB | -121 KG |

NOTES:

MONOBASE INCLUDES SWIFT LIFT LIFTING ANCHORS.

VARIABLE OPENINGS IN TOP SLAB
AVAILABLE UPON REQUEST.

MAX. BURIAL DEPTH: 610mm.
DEEP BURIAL DEPTHS AVAILABLE UPON REQUEST.

LARGE DISTRIBUTION BOX (ST2000)



1645 SYDENHAM RD.
KINGSTON, ONT.

PHONE:
(800) 223-0012
1-613-546-6683

www.anchorconcrete.com