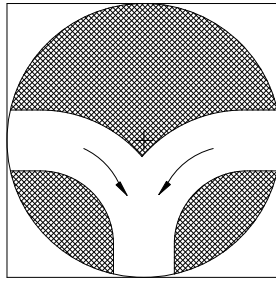
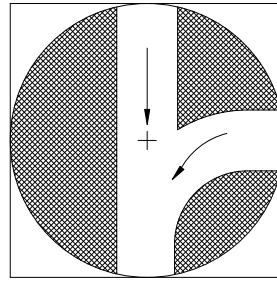


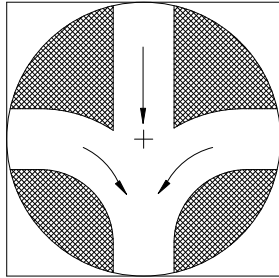
1.Right angle bend



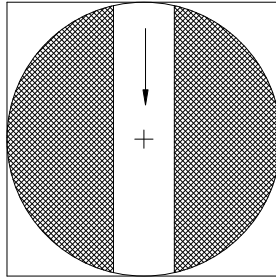
2.Tee connection



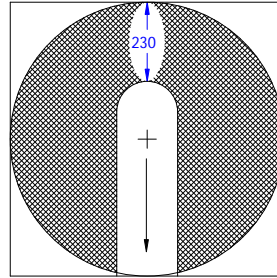
3.Three way junction



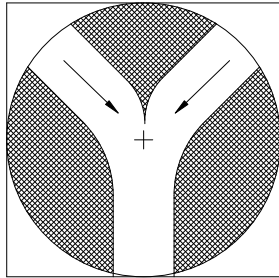
4.Four way junction



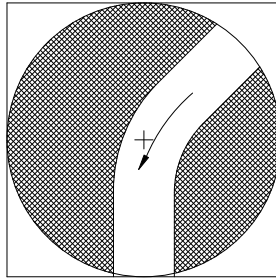
5.Straight through



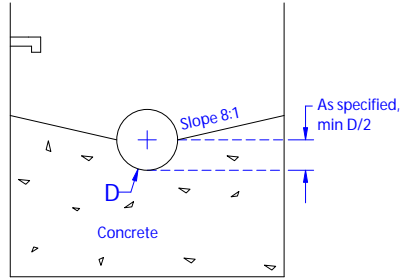
6.Dead end



7.Wye connection



8.45° bend



Section

MAXIMUM SIZE HOLE IN THE WALL IN PRECAST RISER SECTIONS					
nom. diameter mm	no.1-4 mm	no.5&6 mm	no.8 mm	no.7	
				inlet hole mm	outlet hole mm
1200	700	860	780	700	860
1500	860	1170	960	860	1170
1800	1170	1420	1220	1170	1420
2400	1420	1930	1760	1420	1930

NOTES:

- A Concrete to be 20MPa compressive strength
- B Benching to be given wood float finish, channel to be given steel trowel finish.
- C All pipe must extend 300mm straight out from manhole wall before curvature begins.
- D All dimensions are in millimetres unless otherwise shown.



ANCHOR CONCRETE PRODUCTS LTD.

KINGSTON, ONTARIO

PHONE: (800) 223-0012

MANHOLE BENCHING DETAILS
(MH1270 TO MH1275)