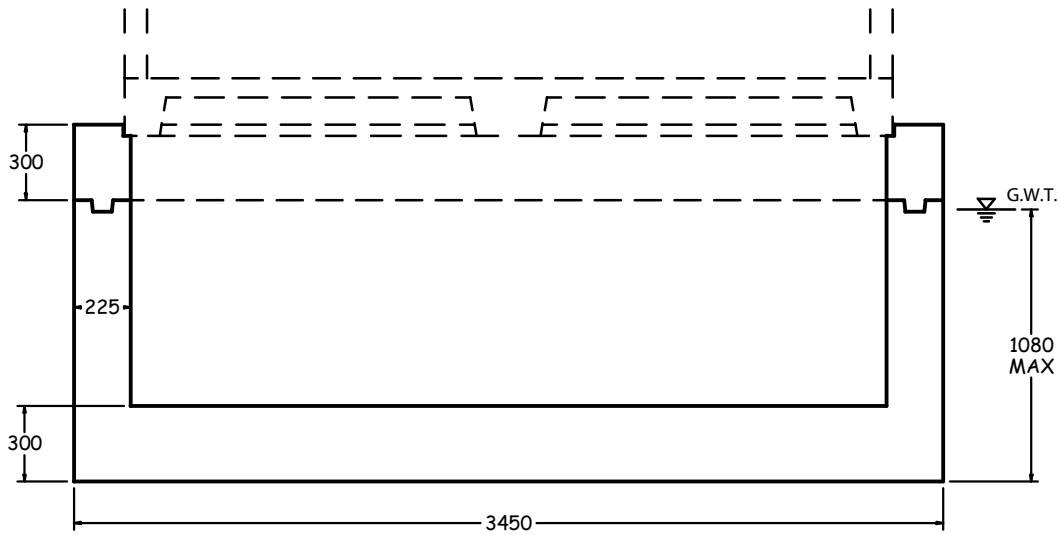


HOLDING TANK FOR REDICAST 8 BUILDINGTM



HOLDING TANK FOR REDICAST 10 BUILDINGTM

SPECIFICATIONS

ALL DIMENSIONS ARE IN MILLIMETERS.

CONCRETE:

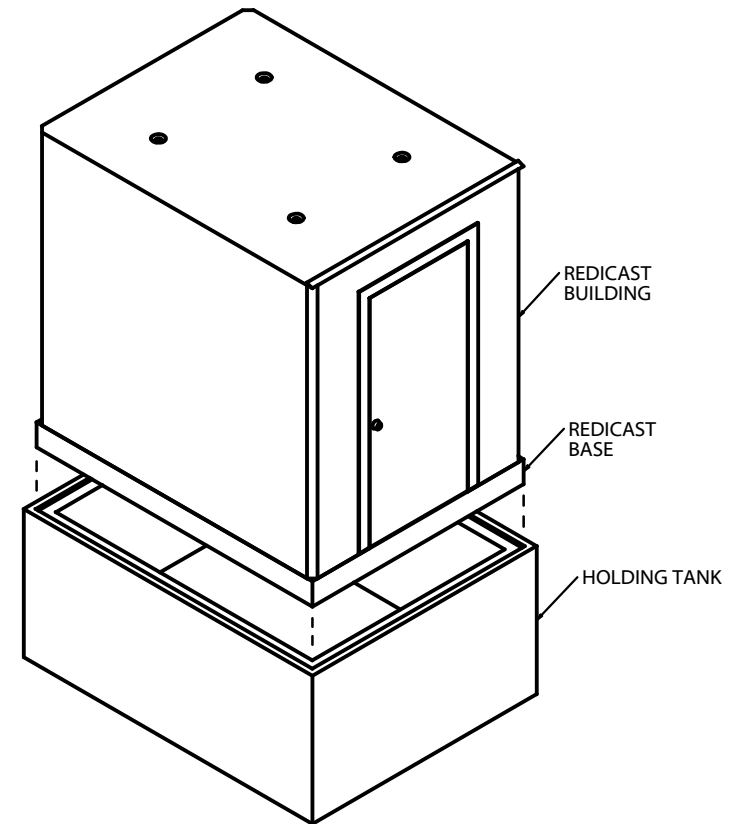
45MPA @28 DAYS, 5-7% AIR ENT.
AS PER CSA A23.4-00.

REINFORCING:

IN ACCORDANCE WITH CSA A23.4-94.
ASTM A82-68, AND A185-69.

NOTE:

REINFORCING DETAILS AVAILABLE UPON
REQUEST.
HOLDING TANK SHALL BEAR ON UNDISTURBED
SOIL HAVING A MAXIMUM DESIGN BEARING
CAPACITY OF 2000 P.S.F.



1645 SYDENHAM RD.
KINGSTON, ONT.

PHONE:
(800) 223-0012
1-613-546-6683

www.anchorconcrete.com