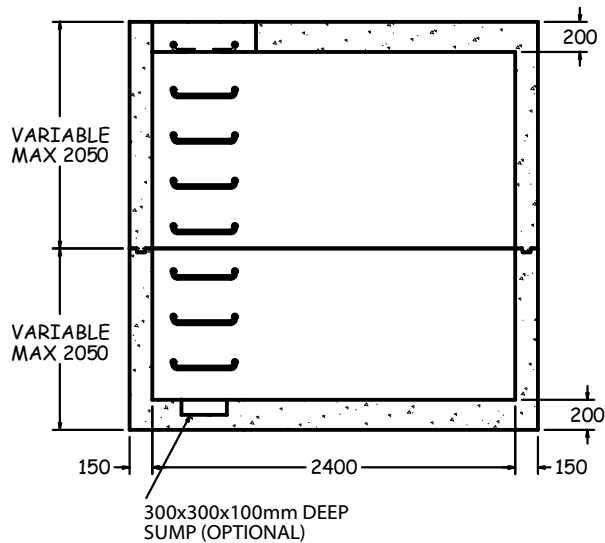
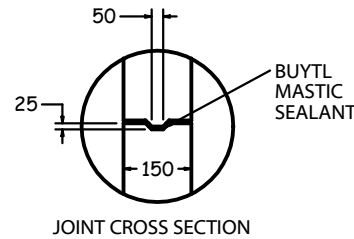
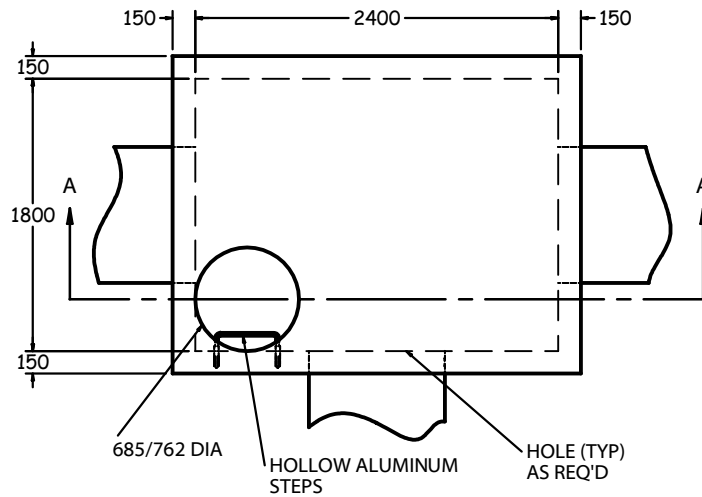


TOP VIEW
1:50



SECTION A-A
1:50

1800mmx2400mm VALVE CHAMBER (MH1800)

SPECIFICATIONS

ALL DIMENSIONS IN MILLIMETRES.

CONCRETE:

45 MPa @ 28 DAYS,
6% AIR ENTRAINMENT IN ACCORDANCE
WITH CSA A23.1 MOD-M90

REINFORCING:

IN ACCORDANCE WITH CSA A23.4-94.
ALL REINFORCING STEEL HAS 30mm MIN. COVER.
REINFORCING DETAILS AVAILABLE UPON REQUEST.

WEIGHT:

WALLS	-3240 KG/V.M.
TOP	-2544 KG
BASE	-2723 KG

NOTES:

PRODUCT MANUFACTURED TO O.H.B.D. LOADING.

ALL PIECES INCLUDE SWIFT LIFT LIFTING ANCHORS.

MAX. RISER HEIGHT: 1830mm (IF REQ'D).

VARIABLE OPENINGS IN MONOTOP
AVAILABLE UPON REQUEST.

762, 1220 OR 1530mm DIA CHIMNEY WITH
LADDER RUNGS FOR DEEP STRUCTURES
AVAILABLE UPON REQUEST.

MAX. BURIAL DEPTH: 9.0M.



1645 SYDENHAM RD.
KINGSTON, ONT.

PHONE:
(800) 223-0012
1-613-546-6683

www.anchorconcrete.com