

SPECIFICATIONS

ALL DIMENSIONS IN MILLIMETRES.

CONCRETE:

45 MPa @ 28 DAYS,
6% AIR ENTRAINMENT IN ACCORDANCE
WITH CSA A23.1 MOD-M90

REINFORCING:

IN ACCORDANCE WITH CSA A23.1-M90
ALL REINFORCING STEEL HAS 30mm MIN. COVER.
REINFORCING DETAILS AVAILABLE UPON REQUEST.

NOTES:

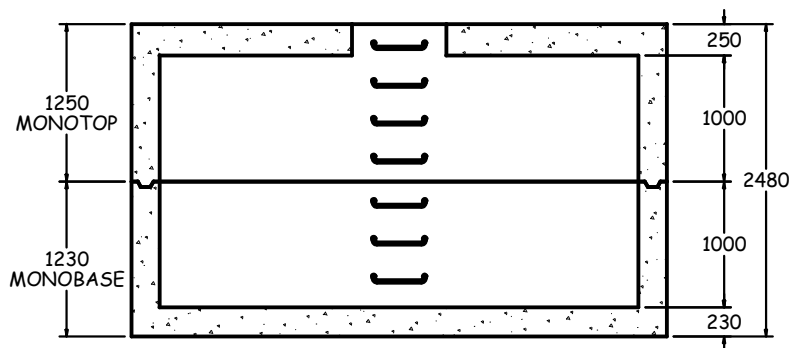
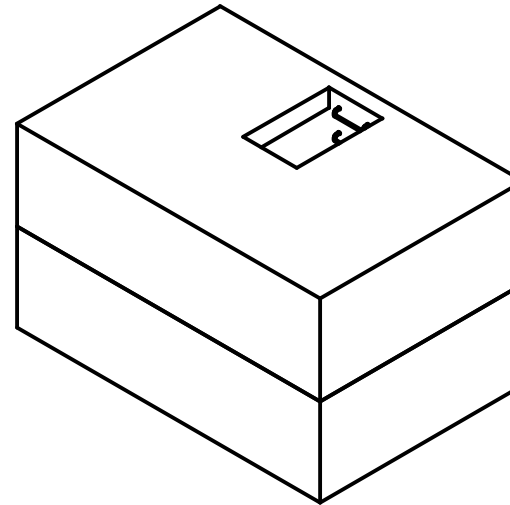
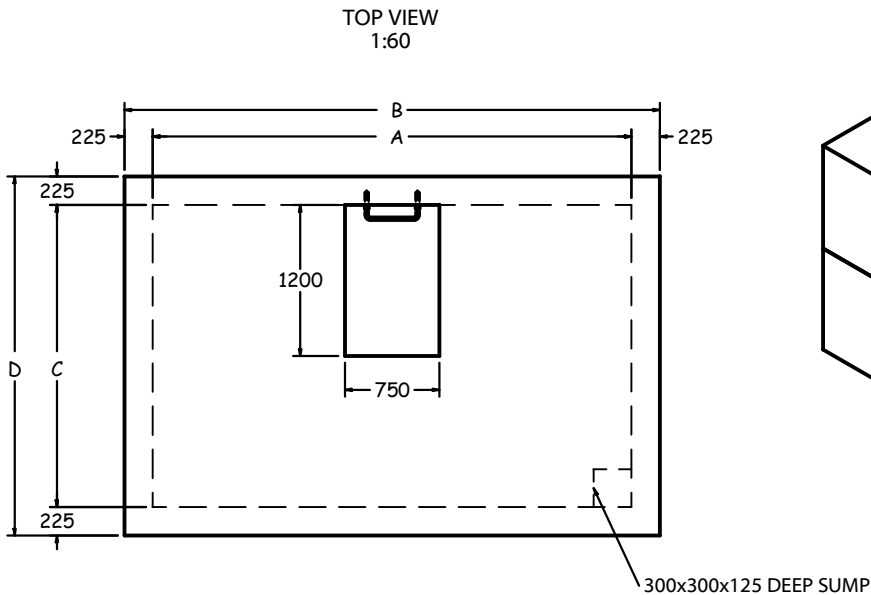
MANUFACTURED IN ACCORDANCE WITH OPSD 1108.01
(CITY OF TORONTO SPEC T-1108.01-1).

PRODUCT MANUFACTURED TO C.H.B.D.C. LOADING.

ALL PIECES INCLUDE SWIFT LIFT LIFTING ANCHORS.

VARIABLE OPENINGS IN MONOTOP
AVAILABLE UPON REQUEST.

MIN. COVER OVER CHAMBER TO BE 300mm.



WATER METER CHAMBER SIZE	DIMENSIONS			
	A	B	C	D
2000x3400	3400	3850	2000	2450
2000x3700	3700	4150	2000	2450
2000x4100	4100	4550	2000	2450
2000x4600	4600	5050	2000	2450
2000x4900	4900	5350	2000	2450
2000x5400	5400	5850	2000	2450
3000x6150	6150	6600	3000	3450

WATER METER CHAMBER (CH2000)



1645 SYDENHAM RD.
KINGSTON, ONT.

PHONE:
(800) 223-0012
1-613-546-6683

www.anchorconcrete.com