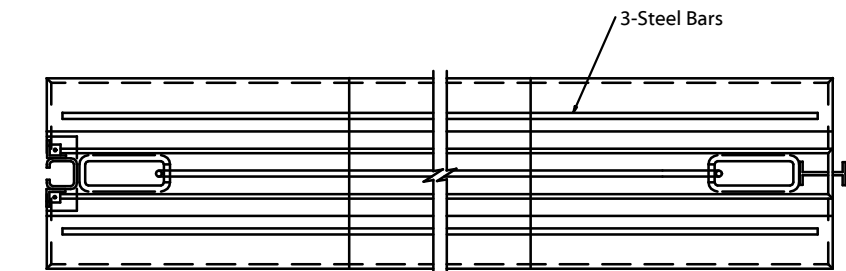
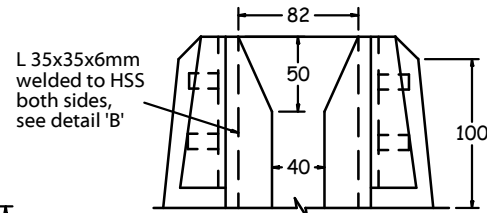


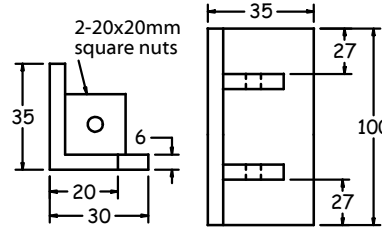
SIDE ELEVATION



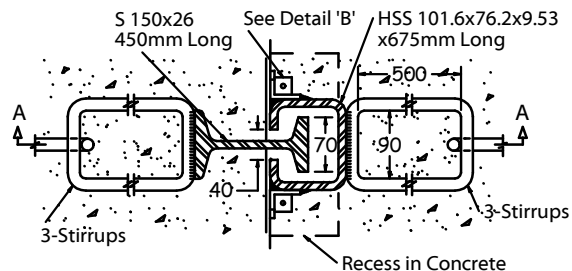
PLAN VIEW



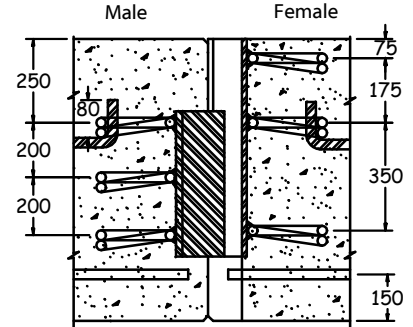
L 35x35x6mm welded to HSS both sides, see detail 'B'



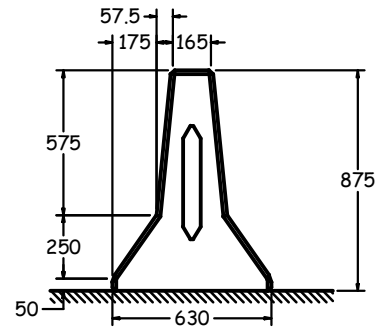
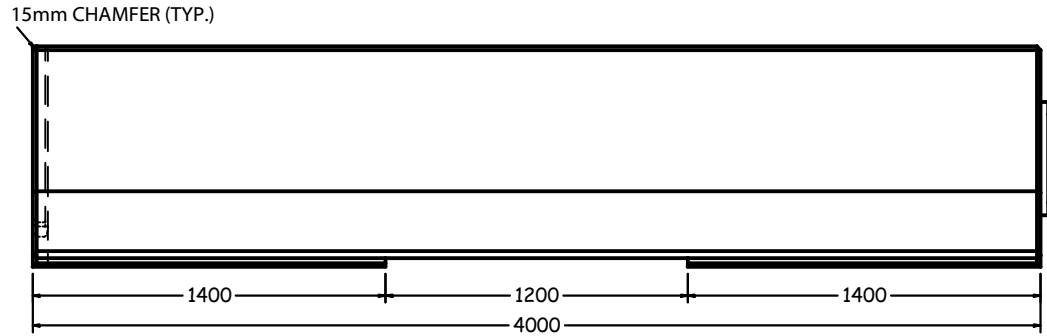
DETAIL 'B'



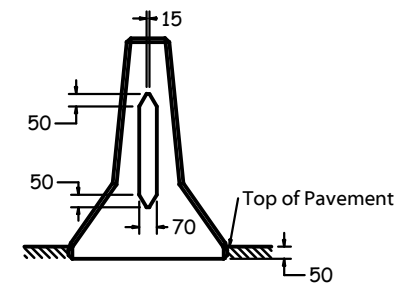
CONNECTION DETAIL



SECTION A-A



TEMPORARY INSTALLATION



PERMANENT INSTALLATION

**SPECIFICATIONS**

ALL DIMENSIONS IN MILLIMETRES.

**CONCRETE:**

35 MPa @ 28 DAYS,  
6% AIR ENTRAINMENT IN ACCORDANCE  
WITH OPSD 920.012

**REINFORCING:**

IN ACCORDANCE WITH CSA G30.12  
ALL REINFORCING STEEL HAS 30mm MIN. COVER

**WEIGHT:**

2550 KG

**TRAFFIC BARRIER (TS1000) W/END CONNECTIONS**



1645 SYDENHAM RD.  
KINGSTON, ONT.

PHONE:  
(800) 223-0012  
1-613-546-6683

www.anchorconcrete.com